

EMUSEN

2021
EMUSEN

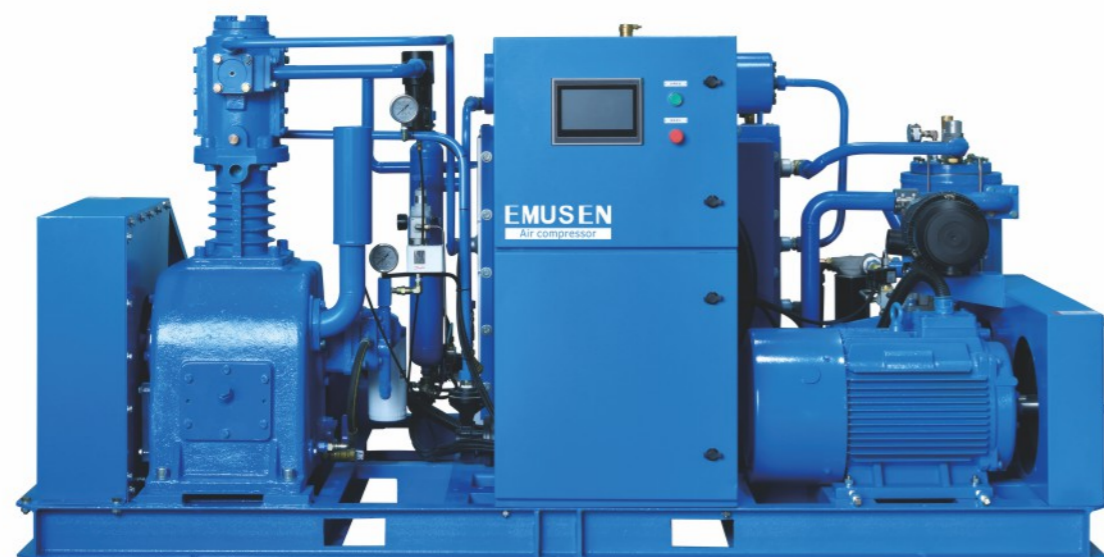
广东爱木森压缩机科技有限公司
Guangdong EMUSEN Compressor Technology Co., Ltd.

High Pressure Compressor



High pressure piston air compressor E series

E系列螺杆增压高压机



E Series

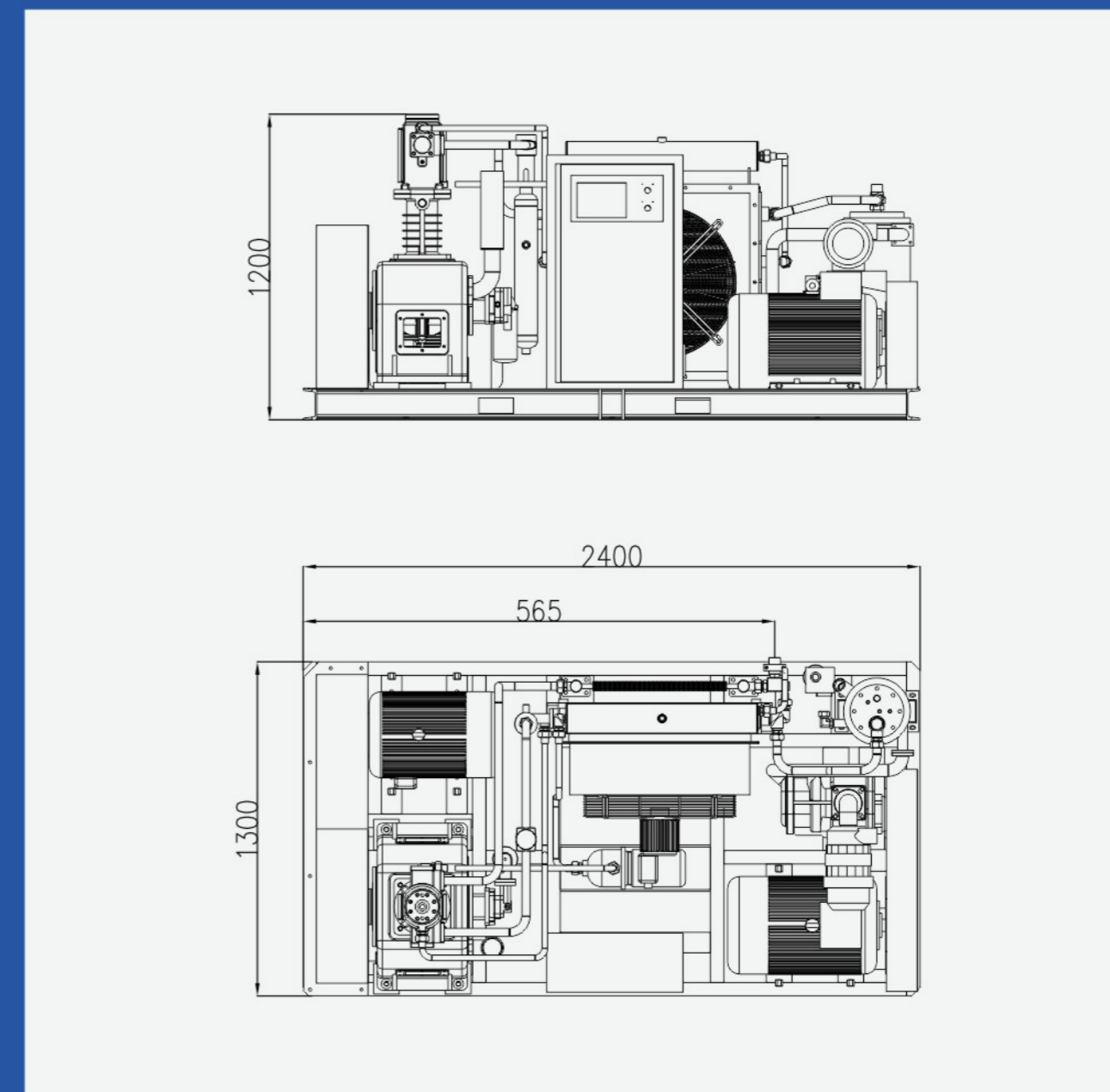
广东爱木森压缩机科技有限公司是一家专业生产空压机的生产型企业，可以为您提供高品质的产品和服务，提供一站式空气系统解决方案。

公司多年来不断努力发展，现主要生产的产品有无油中高压空压机、有油中高压空压机、中高压螺杆增压空压机、螺杆机、后处理净化设备等。

Guangdong EMUSEN Compressor Technology Co., Ltd. is a manufacture specialized in Producing air compressor, We provide customers with high quality products, best services and one stop solution for air compressor system.

With years of effort, our main products including Oil-free medium pressure and high pressure piston air compressor, oil- lubricant medium pressure and high pressure piston air compressor, medium pressure and high pressure screw booster air compressor, screw air compressor, air treatments and so on.

图纸尺寸 Drawing Size

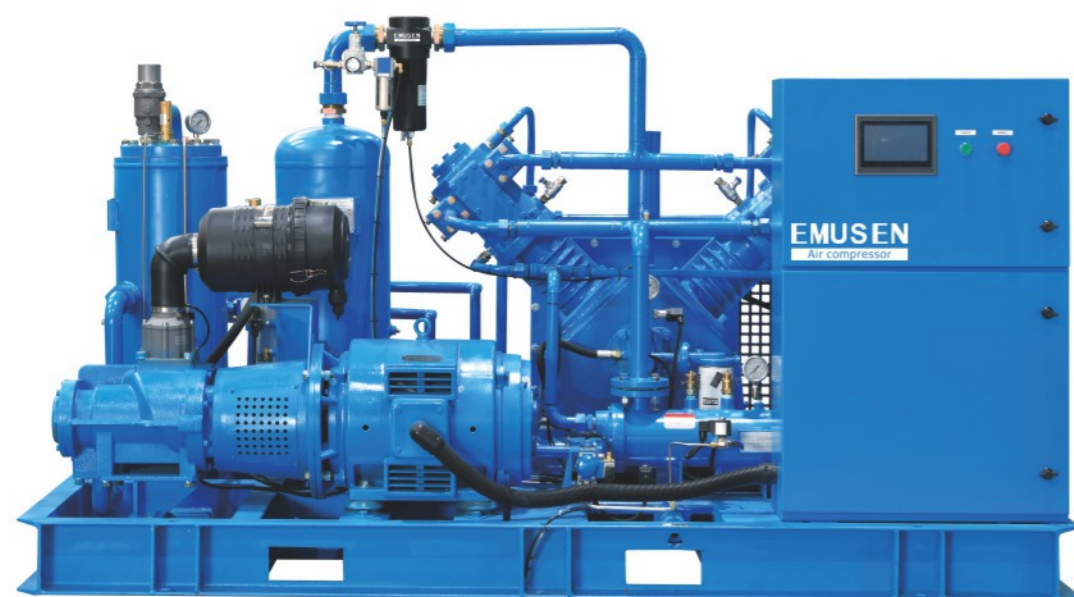


技术参数 Technical Parameters

型号 Models	容积流量 FAD (m ³ /min)	排气压力 Pressure (kg)	装机功率 Power (kw)	排气出口尺寸 Outlet size	重量 Weight (kg)	冷却水量 Water consumption (t/h)	外形尺寸 Dimension (mm)
EME-02/40F	2.5	40	26	RC1"	1500	N/A	2200*1200*1300
EME-03/40F	3	40	37	RC1"	1600	N/A	2400*135*1300
EME-04/30F	4	30	37	RC1"	1800	N/A	2400*1350*1300

High pressure piston air compressor E series

E系列螺杆增压高压机

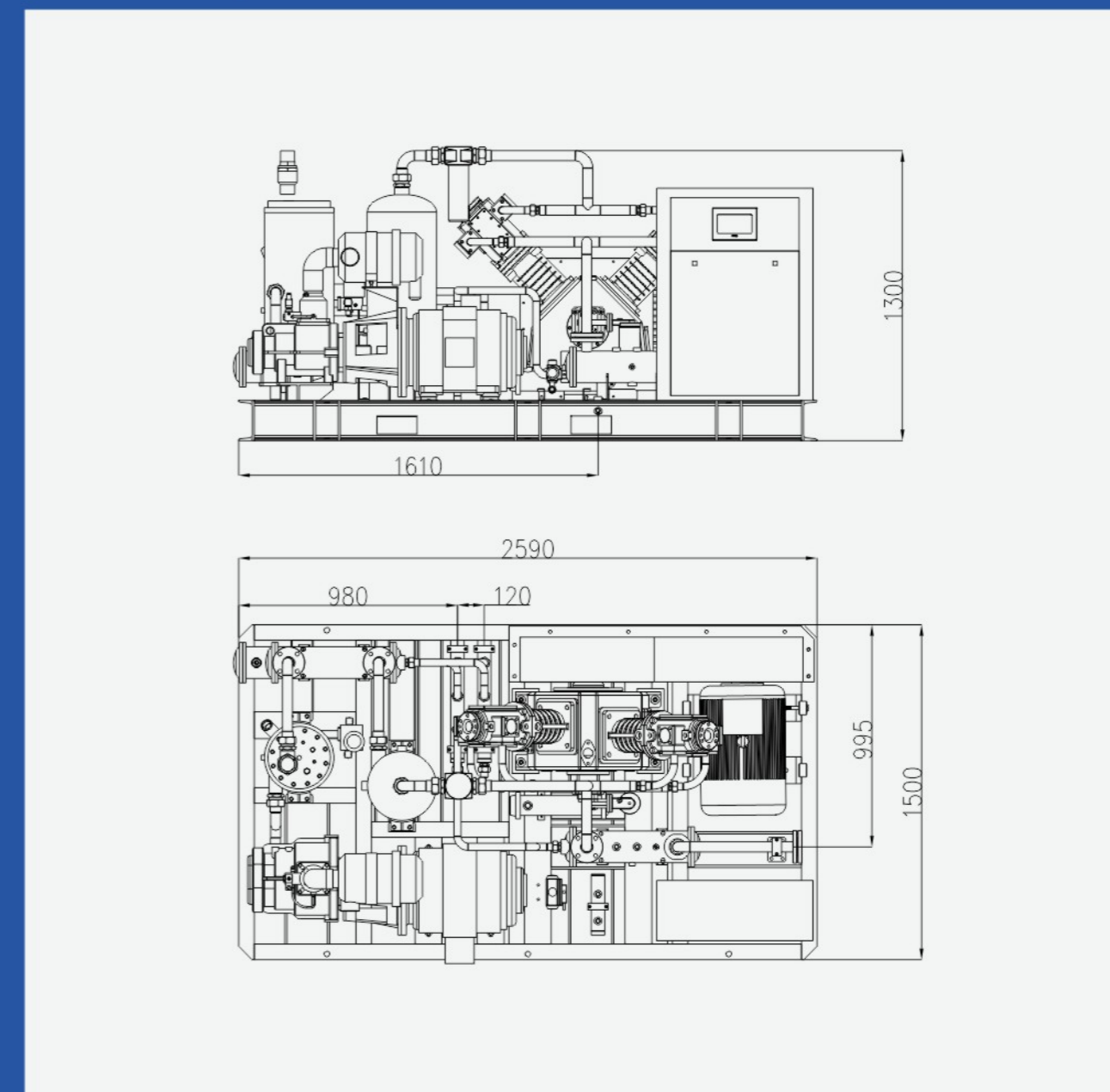


E Series

爱木森螺杆增压机为2级压缩和3级压缩设计，第一级采用螺杆压缩到1.0Mpa，第一级螺杆压缩效率高、稳定、节能，第一级压缩后通过后部冷却器冷却、过滤后进入后段活塞式压缩机压缩到4.0Mpa，通过分段压缩，分段冷却，分段过滤大大提高了压缩效率，做到24小时不间断工作。

EMUSEN screw booster compressor is designed as two stage compression and 3 stage compression, first stage adopt screw compress to 1.0Mpa to reach the effect of high efficiency, stable and energy-saving, then by post cooler cooling and filtrating into second or third stage piston compressor to 4.0Mpa, through section compression, cooling and filtrating greatly improve the compress efficiency to continuously operation for 24 hours.

图纸尺寸 Drawing Size

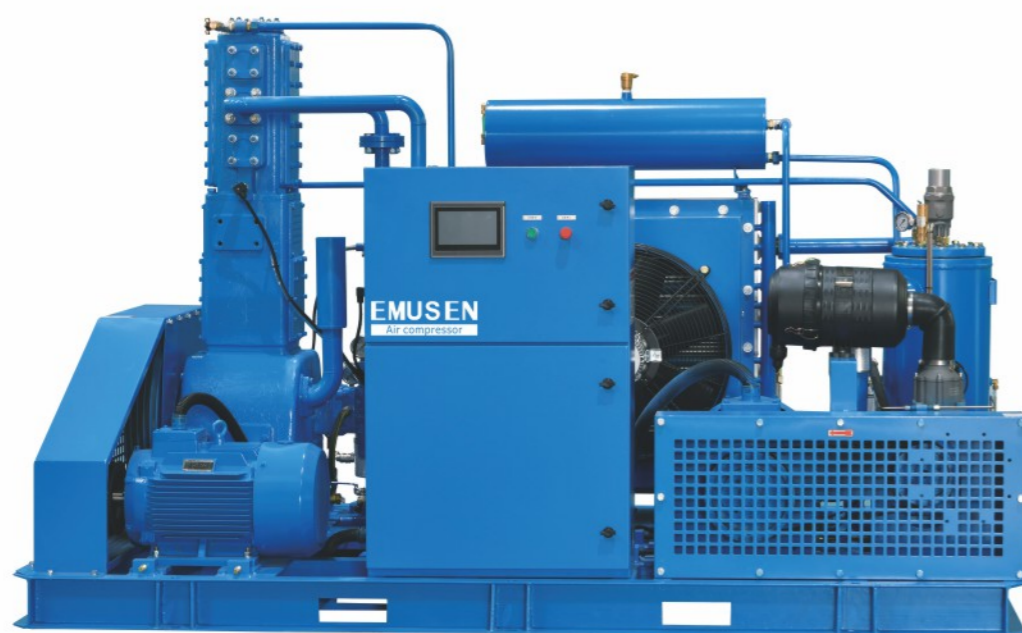


技术参数 Technical Parameters

型号 Models	容积流量 FAD (m ³ /min)	排气压力 Pressure (kg)	装机功率 Power (kw)	排气出口尺寸 Outlet size	冷却水进出口尺寸 The inlet and outlet size of cooling water	重量 Weight (kg)	冷却水量 Water consumption (t/h)	外形尺寸 Dimension (mm)
EME-06/40W	6	40	67	DN40	RC-1-1/2"	2500	25	2600*1500*1300
EME-08/30W	8	30	67	DN40	RC-1-1/2"	3000	30	2600*1500*1300

High pressure piston air compressor S series

S系列螺杆增压高压机

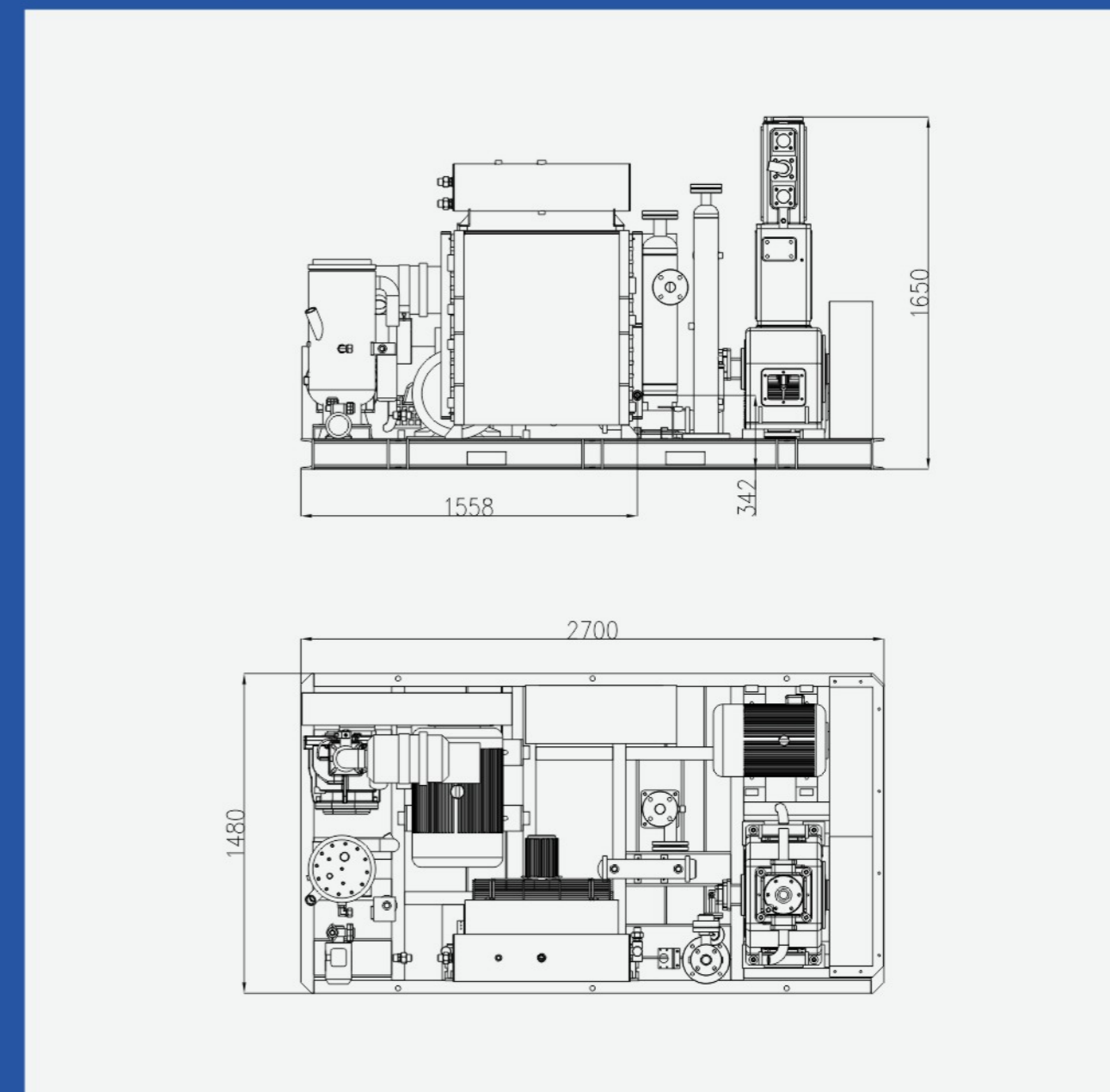


S Series

整体管道系统采用不锈钢管道，保证气体质量，减少因管道生锈造成气阀组件的故障螺杆增压压缩空气系统，增加效率；低转速，两级水冷活塞式压缩机，适用于重载工况，可靠性高，寿命长。

All pipeline adopts stainless pipelines to ensure the quality of air, to reduce the trouble of valve set caused by pipe rust. screw booster compression air system, improving the efficiency, low rotate, two stage water cooled piston compressor is suitable to heavy load working condition, high reliability, long service life.

图纸尺寸 Drawing Size

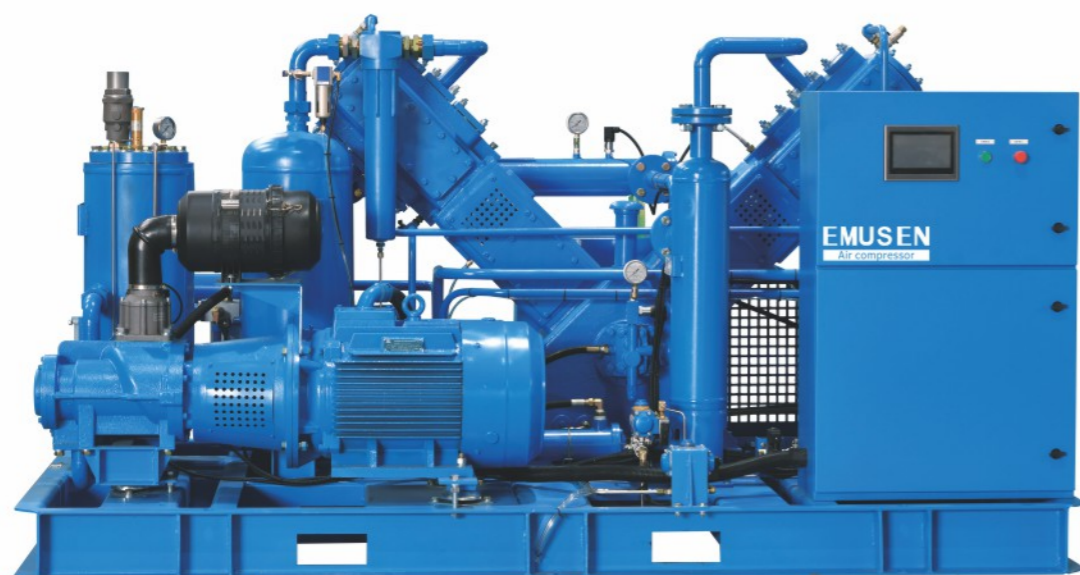


技术参数 Technical Parameters

型号 Models	容积流量 FAD (m ³ /min)	排气压力 Pressure (kg)	装机功率 Power (kw)	排气出口尺寸 Outlet size	重量 Weight (kg)	冷却水量 Water consumption (t/h)	外形尺寸 Dimension (mm)
EMS-04C/40F	4	40	45	RC1"	2100	N/A	2800*1500*1700
EMS-05C/40F	5	40	55	RC1"	2300	N/A	2800*1500*1700
EMS-06C/30F	6	30	60	RC1"	2500	N/A	2800*1500*1700

High pressure piston air compressor S series

S系列螺杆增压高压机

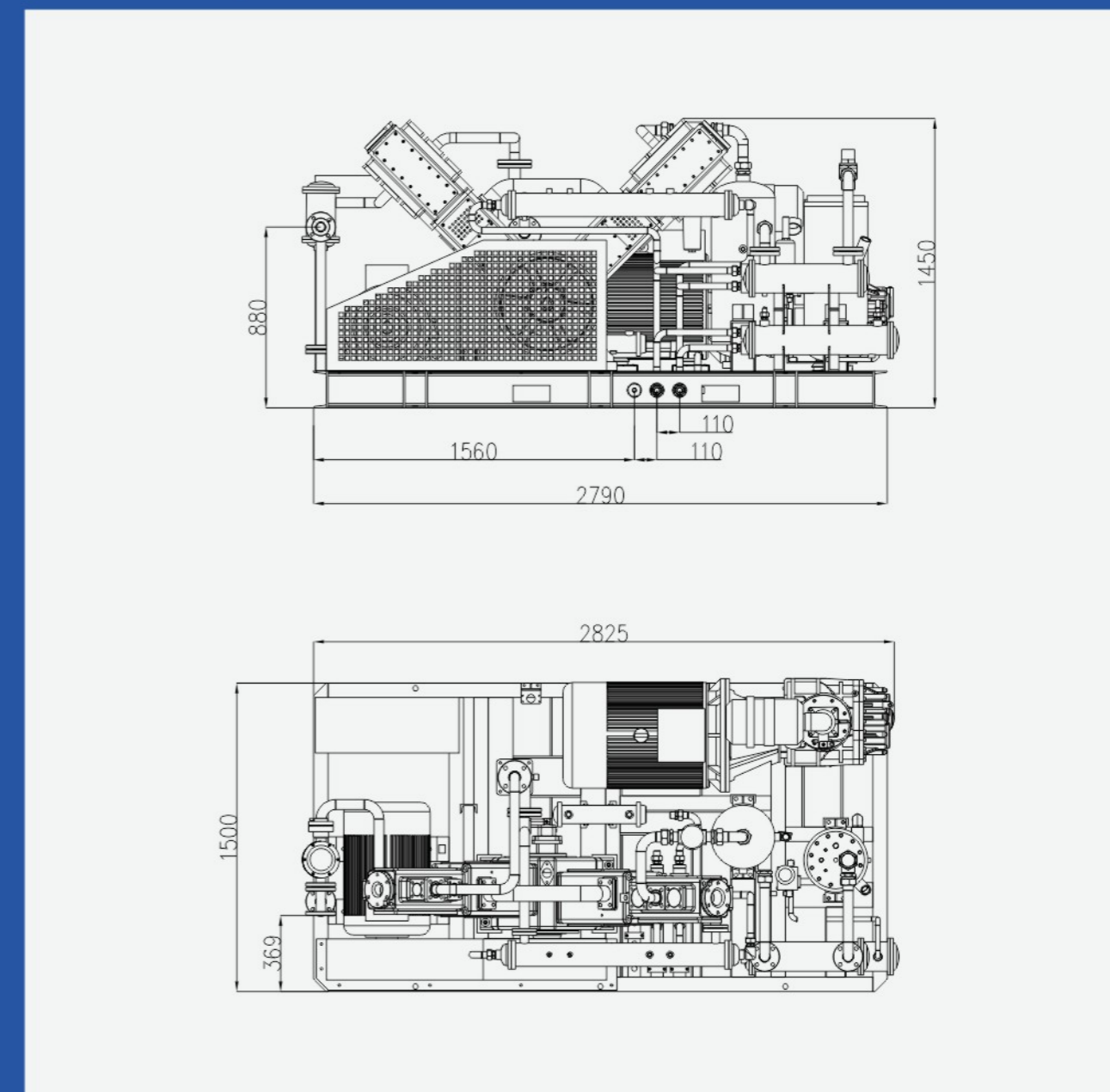


S Series

变频机组: 低运行成本, 低能耗, 低维护成本, 低无功消耗, 在空载和满载之间实现变频自动的调节, 节约能源。

Frequency variable air compressor, low operation cost, low energy consumption, low maintenance cost, low unload consumption, can be automatic adjusted by frequency variable between load and unload to save energy.

图纸尺寸 Drawing Size



技术参数 Technical Parameters

型号 Models	容积流量 FAD (m ³ /min)	排气压力 Pressure (kg)	装机功率 Power (kw)	排气出口尺寸 Outlet size	冷却水进出口尺寸 The inlet and outlet size of cooling water	重量 Weight (kg)	冷却水量 Water consumption (t/h)	外形尺寸 Dimension (mm)
EMS-06/40W	6	40	60	DN40	RC-1-1/2"	3800	30	2900*1500*1500
EMS-08/40W	8	40	85	DN40	RC-1-1/2"	4000	35	2900*1500*1500

High pressure piston air compressor S series

S系列螺杆增压高压机

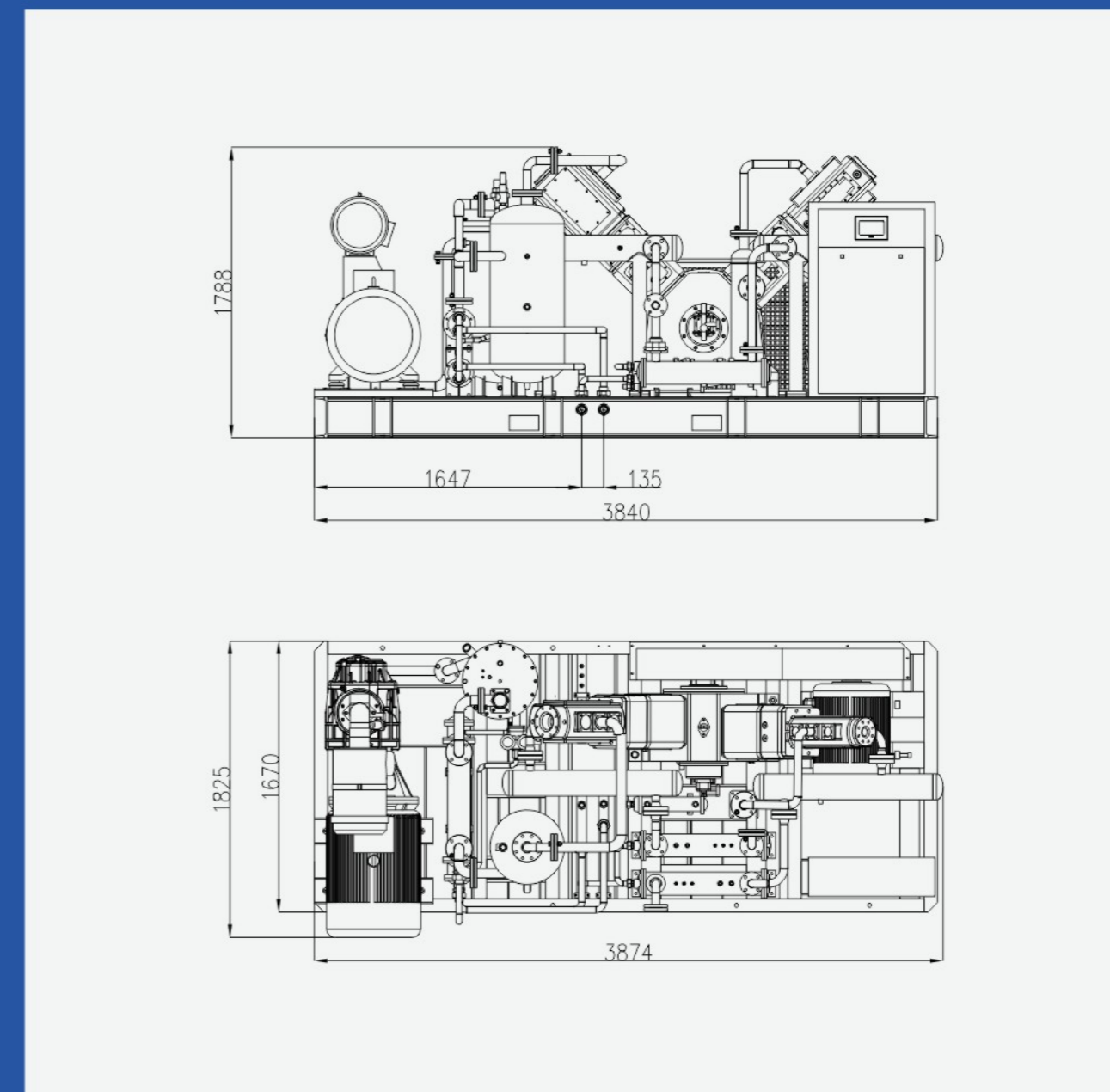


S Series

采用多级压缩，我们采用的是双作用的高效无泄漏压缩，降低了机器运动部件的磨损，增强各元器件寿命。采用高效电机，完美的系统设计使系统降低损耗，保证空压机24小时连续可靠运行。

With multistage compression and double-acting efficient leak-free compression to reduce the wear of moving parts to extreme the life of each component. With high efficiency motor, perfect design of system to minimize the loss of the system to ensure air compressor 24 hours continuous operation.

图纸尺寸 Drawing Size

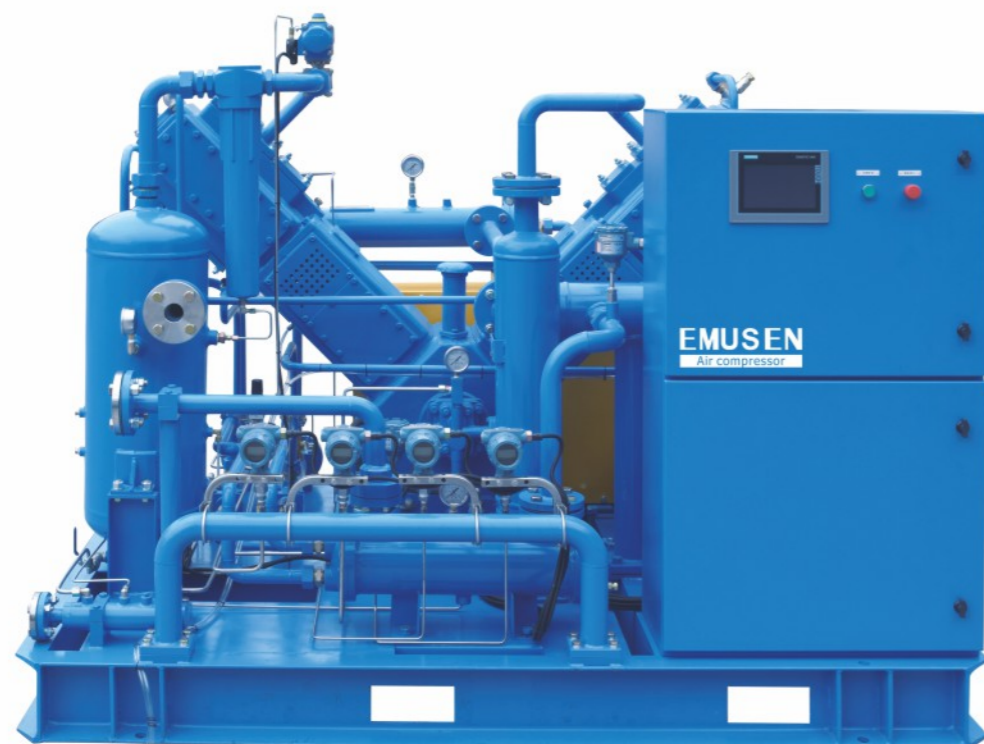


技术参数 Technical Parameters

型号 Models	容积流量 FAD (m ³ /min)	排气压力 Pressure (kg)	装机功率 Power (kw)	排气出口尺寸 Outlet size	冷却水进出口尺寸 The inlet and outlet size of cooling water	重量 Weight (kg)	冷却水量 Water consumption (t/h)	外形尺寸 Dimension (mm)
EMS-10/40W	11	40	120	DN40	RC-1-1/2"	5000	40	3600*1800*2000
EMS-12/40W	13	40	145	DN40	RC-1-1/2"	5200	40	3600*1800*2000
EMS-14/40W	14	40	145	DN40	RC-1-1/2"	5400	45	3600*1800*2000
EMS-16/40W	16	40	165	DN40	RC 2"	5600	45	3900*2100*2000

Medium pressure Oil-free piston booster V series

V系列中压无油增压机

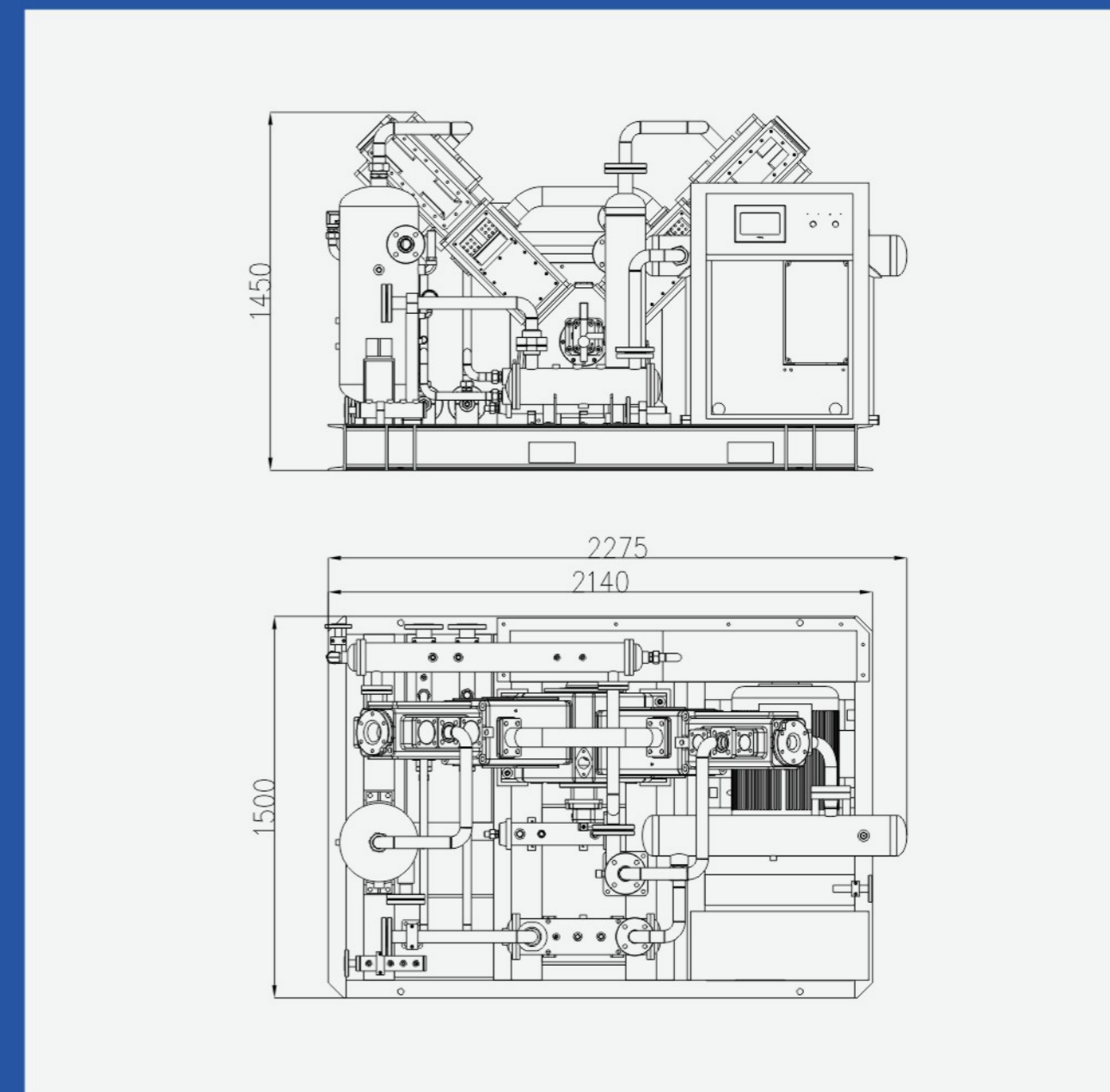


V Series

机组采用独特的模块一体化集成设计，机构简单，安装方便，更换方便，减少管道压损，减少易损件等优点，系统采用PLC智能控制器控制，机器运行时做全方位性能检测为机器运行提供保驾护航。

With the advantages of simple structure, easy to install, easy to maintain, reducing the pressure loss of pipeline and wearing parts and so on, the unit adopts unique integrated design, adopting system with PLC intelligent controller, can do comprehensive performance test to escort operation.

图纸尺寸 Drawing Size



技术参数 Technical Parameters

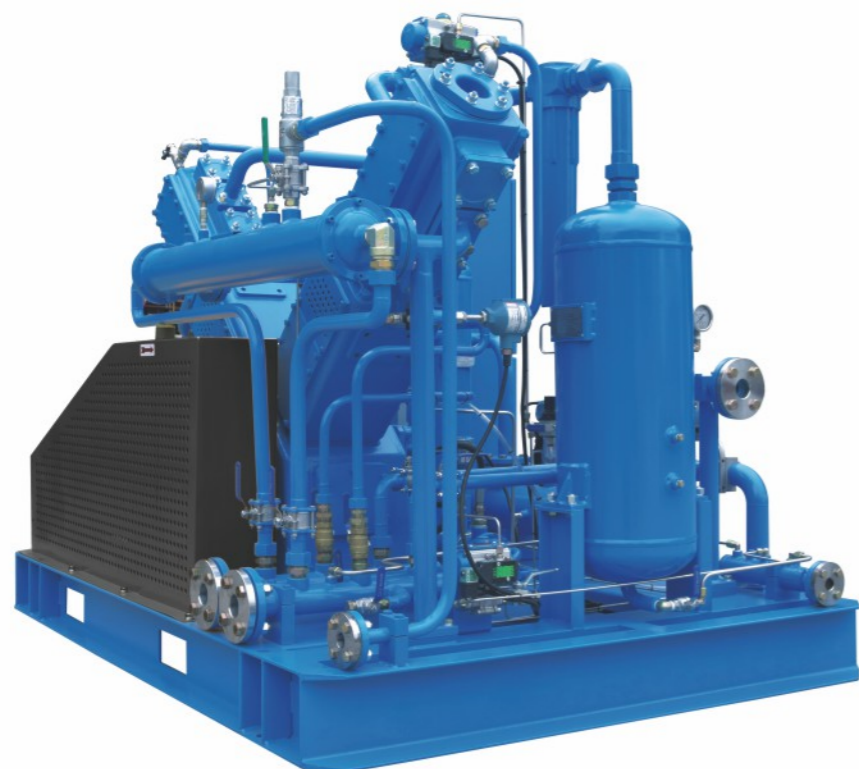
型号 Models	容积流量 FAD (m ³ /min)	进气压力 Inlet pressure (Bar)	排气压力 Pressure (kg)	装机功率 Power (kw)	排气出口尺寸 Outlet size	冷却水进出口尺寸 The inlet and outlet size of cooling water	压缩级数 Compression stage
EMV-6/10-40W	6	8-10	40	30	DN40	DN 40	2
EMV-8/10-40W	8	8-10	40	30	DN40	DN 40	2
EMV-10/10-40W	10	8-10	40	45	DN40	DN 50	2
EMV-12/10-40W	12	8-10	40	55	DN40	DN 50	2

Medium pressure Oil-free piston booster V series

V系列中压无油增压机

增压机主要原理是在原有一定压力范围内的压缩空气通过增压机再提高到需要的压力，主要增压压力范围为2bar开始增压，最高压力可增压至80bar，单机气量从0.1立方到40立方，如需更大气量，更高压力可定制。

The working principle of booster is to increase the pressure range of original to required range, generally start pressurization range is from 2 bar to 80 bar, the flow rate of air is from 0.1cbm to 40cbm, more flow rate and pressure can be special designed and made.



技术参数 Technical Parameters

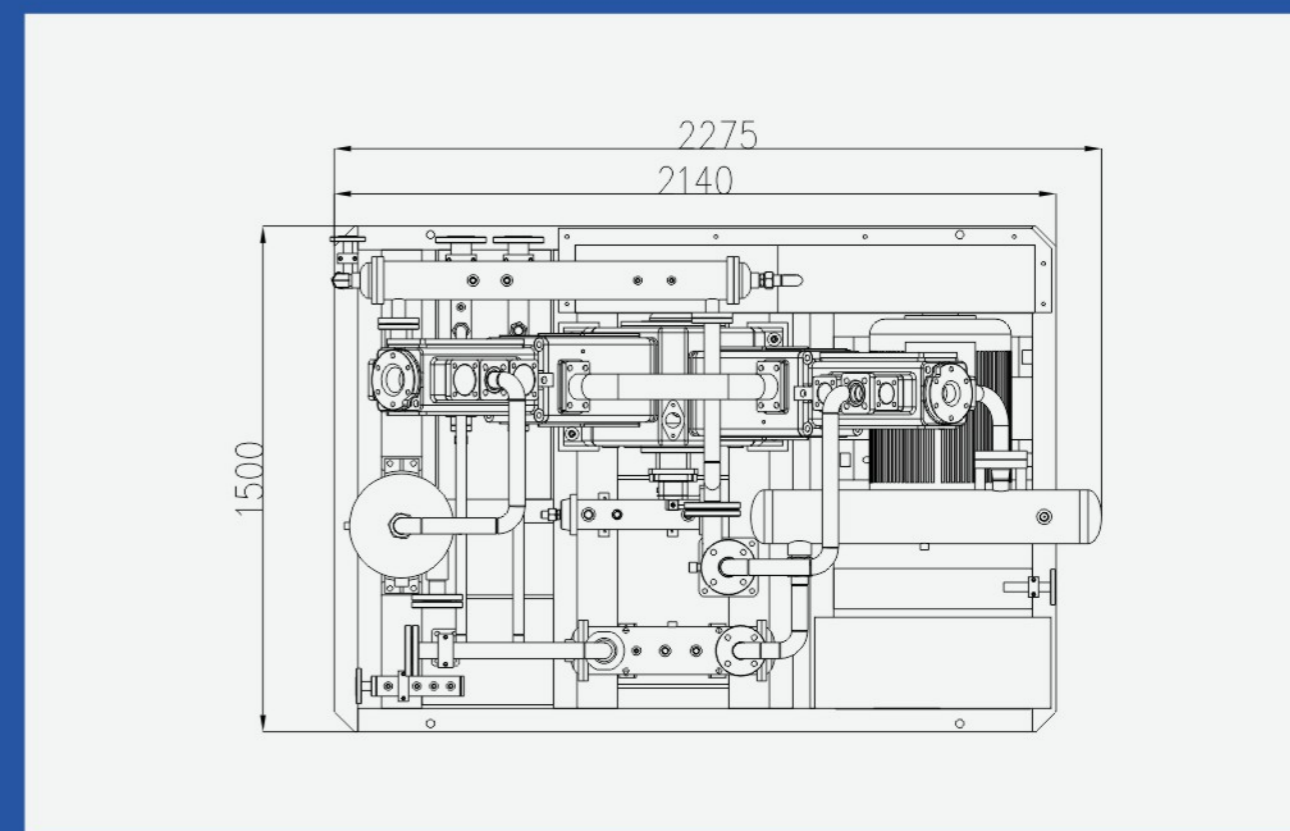
型号 Models	容积流量 FAD (m ³ /min)	进气压力 Inlet pressure (Bar)	排气压力 Pressure (kg)	装机功率 Power (kw)	排气出口尺寸 Outlet size	冷却水进出口尺寸 The inlet and outlet size of cooling water
EMV-16/10-40W	16	8-10	40	75	DN50	DN 50
EMV-20/10-40W	20	8-10	40	90	DN50	DN 50
EMV-25/10-40W	25	8-10	40	110	DN50	DN 65
EMV-30/10-40W	30	8-10	40	132	DN50	DN 65

High pressure oil-free piston booster H series

H系列高压无油增压机

增压机可以压缩各种气体：空气、氮气、氧气、二氧化碳等，不同气体运用需要特别说明，并特别定制。

Booster can compress various of gas, such as air, nitrogen, oxygen, carbon dioxide and so on, different gas use need special illustrated and custom-made.



技术参数 Technical Parameters

型号 Models	容积流量 FAD (m ³ /min)	进气压力 Inlet pressure (Bar)	排气压力 Pressure (kg)	装机功率 Power (kw)	排气出口尺寸 Outlet size	冷却水进出口尺寸 The inlet and outlet size of cooling water
EMH-3/10-60W	3	8-10	60	30	R1"	RC1-1/2
EMH-8/10-60W	8	8-10	60	45	DN32	RC1-1/2
EMH-10/10-60W	10	8-10	60	55	DN32	RC1-1/2
EMH-20/10-60W	20	8-10	60	110	DN50	DN 65
EMH-40/10-70W	40	8-10	70	250	DN50	DN 80